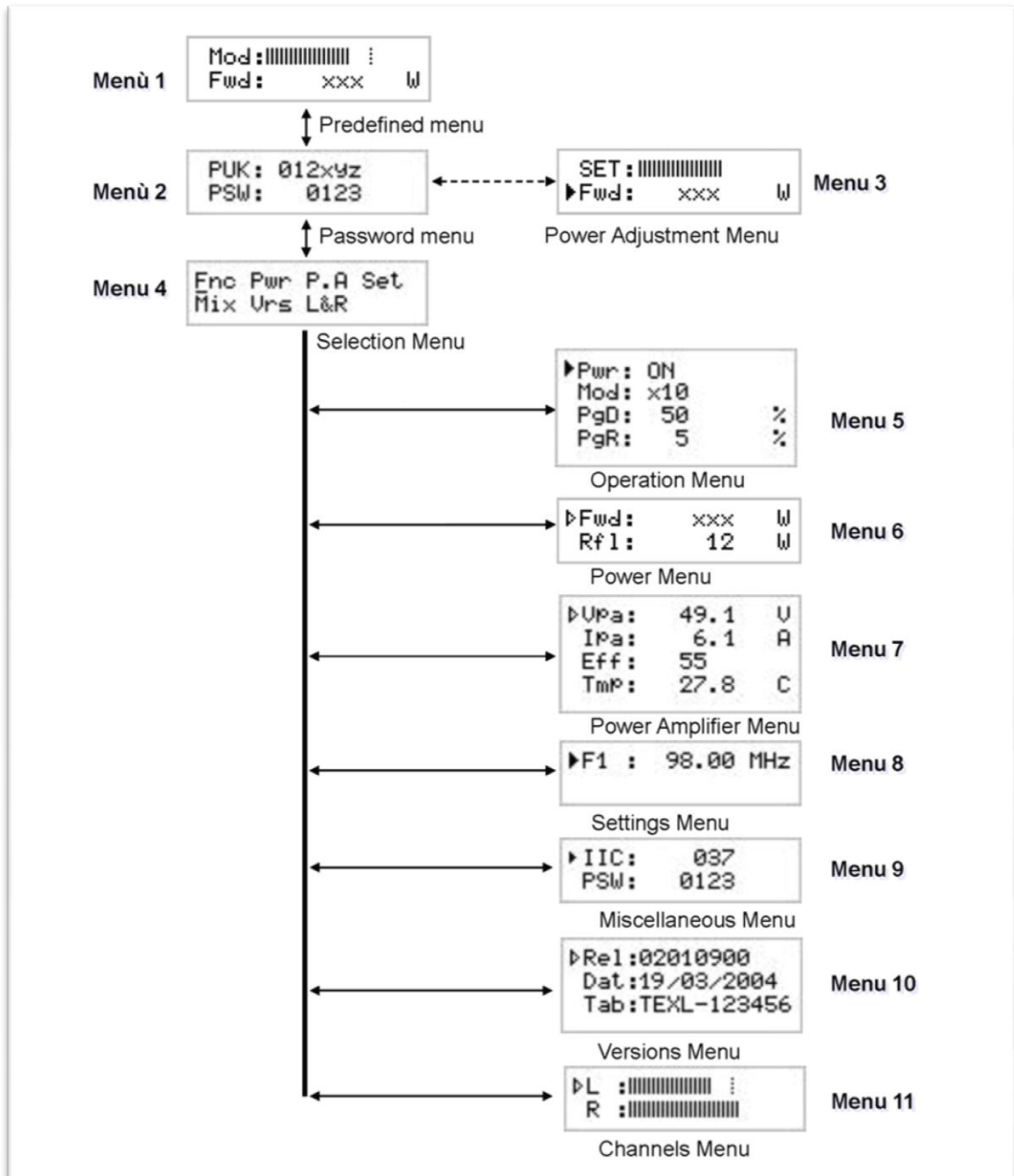


# TEX30LCD/S

## 1. Frequency Range

From 87.5 to 108 MHz . Frequency programmability from software, with 10 kHz steps

## 2. Tree Diagram Software



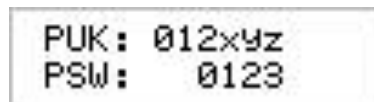
### 3. Power Instructions

- 1) Power on the exciter and ensure that the **ON** light turns on. Equipment name should appear briefly on the display, quickly followed by modulation and forward power readings (Menu 1), provided that the exciter is delivering output power.



Menu 1

- 2) **In case of a password has been set, through the Miscellaneous menu**, enter the code and then confirm to be able to view or modify the parameters of the machine. The screen that is shown is similar to the following:



Menu 2

**NOTE: It is advisable to write down the password set, if you forget the password it is not possible to recover it automatically. To recover the password, contact Customer Service by sending the alphanumeric PUK code**



- 3) To modify power level setting, hold down the **ENTER** button until opening the power setup menu. The edit screen will look like this:



Menu 3

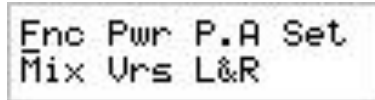
Next to **SET** indication, a bar provides a graphic display of preset output power. The filled portion of the bar is proportional to set power level.

Example		
100% output power	Full bar	≅ Full scale output
25% output power	¼ bar	≅ ¼ of full scale output

The bottom line provides instantaneous power reading, press button  to increase level, press  to decrease it. When you have achieved the desired level, press **ENTER** to confirm and exit the default menu. Please note that the setting is stored automatically; in other words, if you press **ESC** or do not press any keys before the preset time times out, the latest power level set will be retained.

**NOTE:** This feature prevents the equipment from delivering maximum power as soon as output is enabled from menu 4, or in the event the equipment is already set to ON when you energize it.

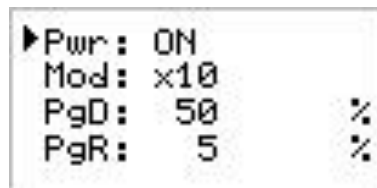
- 4) When the display is off, touching any key will turn on backlighting.  
When the display is on, pressing the ESC button from the default menu (menu 1) calls up the selection screen (menu 4), which gives access to all other menus:



```
Fnc Pwr P.A Set
Mix Urs L&R
```

*Menu 4*

- Select “Pwr Menu” , then press **ENTER** to confirm.
- 5) Ensure that the equipment is not in a locked-out state. Press **ESC** to call up the selection screen (menu 4).  
Highlight **Fnc** and press **ENTER** to confirm and access the selected menu (menu 5).  
If **PWR** is set to OFF, i.e. power output is disabled, move cursor to **PWR**. Press **ENTER** and label will switch to **ON**, i.e. power output is enabled:



```
▶Pwr : ON
Mod : x10
PgD : 50      %
PgR : 5       %
```

*Menu 5*

- Press **ESC** twice to go back to the default menu (menu 1).
- 6) Fine tune power setting from menu 3 (see description of item 3) until achieving the desired value.  
**WARNING:** Equipment is capable of delivering more than rated output; however, never exceed the specified power rating.  
**NOTE:** If power is set to 0 W in the Power Setup Menu, the INTERLOCK OUT contact is activated and any external appliances connected to it are immediately inhibited.  
Next, you can review all operating parameters of the equipment through the management firmware.  
Normally, the equipment can run unattended. Any alarm condition is handled automatically by the safety system or is signalled by the LED indicators on the panel or by display messages.  
**NOTE:** Standard factory settings are output power set to upper limit (unless otherwise specified by customer) and OFF.

## 4. Tuning Instructions

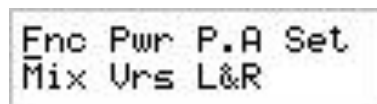
- 1) Power on the exciter and ensure that the **ON** light turns on. Equipment name should appear briefly on the display, quickly followed by modulation and forward power readings (Menu 1), provided that the exciter is delivering output power.



```
Mod : ||||| :  
Fwd :   xxx  W
```

*Menu 1*

- 2) When the display is off, touching any key will turn on backlighting. When the display is on, pressing the **ESC** button from the default menu (menu 1) calls up the selection screen (menu 5), which gives access to all other menus:



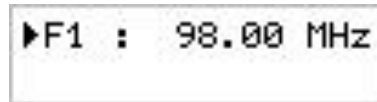
```
Enc Pwr P.A Set  
Mix Urs L&R
```

*Menu 4*

Select "Set Menu" , then press **ENTER** to confirm.

- 3) Set a new frequency value and then press the **ENTER** button to confirm your selection; the exciter unlocks from current frequency (the **LOCK** LED turns off) and will lock to the new operating frequency (**LOCK** turns back on again).

If you press **ESC** or let the preset time time out, the previous frequency setting is retained.



```
▶F1 : 98.00 MHz
```

*Menu 8*

## 5. User Manual

User manual and technical annex are attached in the main folder.

R.V.R. Elettronica s.r.l.  
Via del Fonditore, 2/2c - 40138 Bologna-Italy  
P.Iva - Vat.no. IT 02124450376  
Tel. +39 051 6010506 - Fax +39 051 6011104  
Certified - UNI EN ISO 9001  
Valentino Biavati  
CEO / President